

Guidelines for Responsible and Human-Centered Use of Explainable Machine Learning

Patrick Hall*
Washington, DC
patrick.hall@h2o.ai

June 11, 2019

1 Introduction

Explainable machine learning (ML) enables human learning from ML, human appeal of automated model decisions, regulatory compliance, and white-hat hacking and forensic analysis of ML models.^{1,2,3} Explainable ML (i.e. *explainable artificial intelligence* or XAI) has been implemented in numerous open source and commercial packages and explainable ML is also an important, mandatory, or embedded aspect of commercial predictive modeling in industries like financial services.^{4,5,6} However, like many technologies, explainable ML can be misused, particularly as a faulty safeguard for harmful black-boxes, e.g. *fairwashing*, and for other malevolent purposes like model stealing [1], [31], [34]. This text presents several definitions, examples, and qualifications in Section 2 before covering the details of responsible and human-centered use guidelines in Sections 3.1 – 3.4. This text concludes in Section 4 with the seemingly natural argument for a holistic approach to ML that includes interpretable (i.e. *white-box*) models along with explanatory, debugging, and disparate impact analysis techniques for any ML system that impacts humans.

2 Definitions and Examples

While explainable ML practitioners have seemingly not yet adopted a clear taxonomy of concepts or a precise vocabulary, many authors have grappled with a variety of general concepts related to interpretability and explanations. Some of these efforts include: “A Survey Of Methods For Explaining Black Box Models” (Guidotti et al. [17]), “The Mythos of Model Interpretability” (Lipton [24]), *Interpretable Machine Learning* (Molnar [27]), “Interpretable Machine Learning: Definitions, Methods, and Applications” (Murdoch et al. [29]), and “Challenges for Transparency” (Weller [37]). To avoid ambiguity, this section addresses the terms and phrases *interpretable*, *explanation*, *explainable ML*, *white-box* or *interpretable models*, *model debugging*, *fairness*, and *human-centered ML*.

*H2O.ai and George Washington University

¹This text is not legal compliance advice.

²In the U.S., explanations and the model documentation they enable may be required under the Civil Rights Acts of 1964 and 1991, the Americans with Disabilities Act, the Genetic Information Nondiscrimination Act, the Health Insurance Portability and Accountability Act, the Equal Credit Opportunity Act, the Fair Credit Reporting Act, the Fair Housing Act, Federal Reserve SR 11-7, and the European Union (EU) Greater Data Privacy Regulation (GDPR) Article 22 [38].

³For security applications, see for instance: <https://www.oreilly.com/ideas/proposals-for-model-vulnerability-and-security>.

⁴Like H2O-3, XGBoost, and various other Python and R packages. See: <https://github.com/jphall663/awesome-machine-learning-interpretability> for a longer, curated list of relevant open source software packages.

⁵For instance Datarobot, H2O Driverless AI, SAS Visual Data Mining and Machine Learning, Zest AutoML, and likely several others.

⁶Working paper: “SR 11-7, Validation and Machine Learning Models”, Tony Yang, CFA, CPA, FRM. KPMG USA.

2.1 Interpretable and Explanation

From the review and survey corpus, this text selects for an internal definition of *interpretable*, “the ability to explain or to present in understandable terms to a human,” from “Towards a Rigorous Science of Interpretable Machine Learning” (Doshi-Velez and Kim [7]). From “Explaining Explanations: An Approach to Evaluating Interpretability of Machine Learning” (Gilpin et al. [13]), “when you can no longer keep asking why,” will serve as an internal working definition of a viable *explanation*. These two thoughtful characterizations link explanation to some ML process being interpretable and also provide an abstract objective for any given explanatory task.

2.2 Explainable ML and Interpretable or White-box Models

Herein *explainable ML* means mostly post-hoc analysis and techniques used to understand trained model mechanisms or predictions. Examples of common explainable ML techniques include:

- Local and global feature importance methods, in particular Shapley values [21], [25], [32], [33].
- Local and global model-agnostic surrogate models, such as surrogate decision trees and Local Interpretable Model-agnostic Explanations (LIME) [4], [5], [6], [20], [30], [36].
- Local and global visualizations of model predictions such as accumulated local effect (ALE) plots, 1- and 2-dimensional partial dependence plots, and individual conditional expectation (ICE) plots [3], [11], [14].

Although difficult to quantify, credible research efforts into scientific measures of interpretability are underway [10], [28]. Furthermore, the ability to measure degrees of interpretability implies it’s not a binary, on-off quantity.⁷ Here unconstrained, traditional black-box ML models, such as multilayer perceptron (MLP) neural networks and GBMs, are said to be directly uninterpretable, potentially unsafe for use on humans, but not necessarily completely unexplainable. In this text *interpretable* or *white-box models* will include linear models, decision trees, constrained or Bayesian variants of traditional black-box ML models, or novel types of models designed to be directly interpretable. Additional examples of sophisticated and interpretable modeling techniques include explainable neural networks (XNNs), explainable boosting machines (EBMs), monotonically constrained gradient boosting machines (GBMs), scalable Bayesian rule lists, or super-sparse linear integer models (SLIMs), [35], [36], [39].^{8,9,10}

2.3 Model Debugging and Fairness

Herein *model debugging* refers to testing ML models to increase trust in model mechanisms and predictions. Examples of model debugging techniques include variants of sensitivity (i.e. “what-if?”) analysis, residual analysis, assertions, and units test used to verify the accuracy or security of ML models.¹¹ Model debugging should also include remediating any discovered errors or vulnerabilities. Here *fairness* techniques refer to disparate impact analysis, model selection by minimization of disparate impact, and remediation techniques such as disparate impact removal preprocessing or equalized odds post-processing [8], [19].¹²

2.4 Human-Centered ML

Finally, this text does not seek to redefine *human-centered ML* which has a notable presence in the human computer interaction (HCI) literature and is often associated with interactive software for enabling greater human control and understanding of ML processes [12]. This text simply seeks to draw attention to mostly

⁷For instance, see Figure 3 in “Quantifying Interpretability of Arbitrary Machine Learning Models Through Functional Decomposition” (Molnar et al. [28]).

⁸As implemented in the Microsoft interpret library: <https://github.com/microsoft/interpret>.

⁹As implemented in XGBoost (<https://xgboost.readthedocs.io/en/latest/tutorials/monotonic.html>) or H2O-3 (https://github.com/h2oai/h2o-3/blob/master/h2o-py/demos/H2O_tutorial_gbm_monotonicity.ipynb).

¹⁰And other similar techniques, say those mentioned here: <https://users.cs.duke.edu/~cynthia/papers.html>.

¹¹And other similar techniques, say those mentioned here: <https://debug-ml-iclr2019.github.io/>.

¹²And other similar techniques, say those mentioned here: <http://www.fatml.org/resources/relevant-scholarship>.

newer, but certainly some pre-existing or established, ML techniques that may further the goals of human-centered ML. This text also acknowledges the importance of informed user interaction and user interface design and implementation in the adoption of any proposed guidelines.

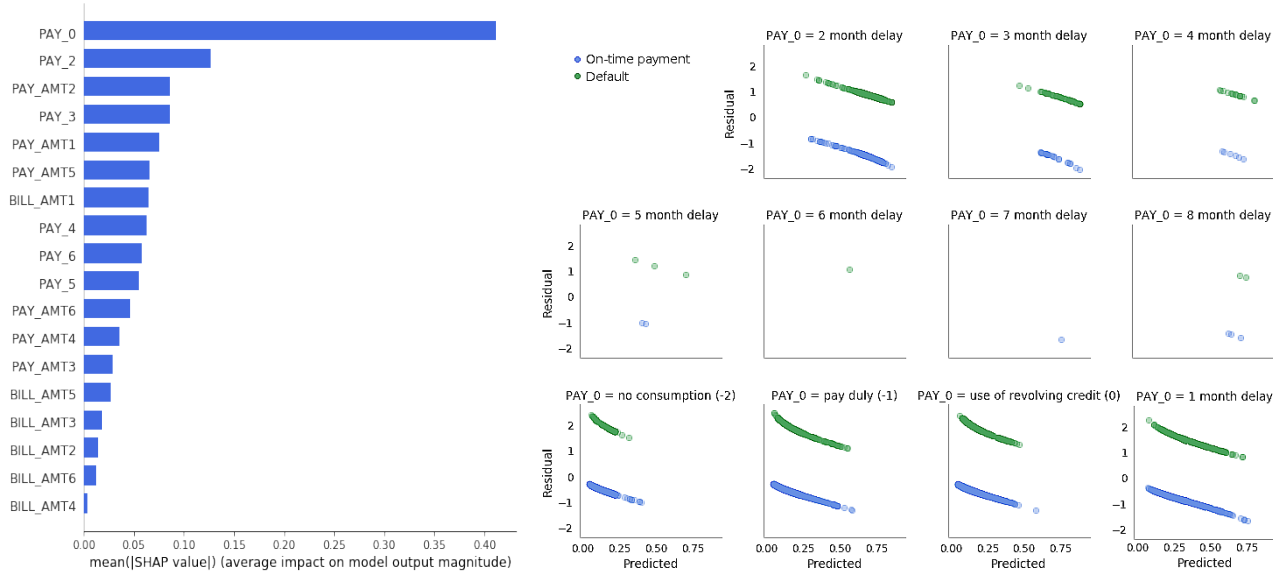
3 Guidelines

Four guidelines are presented and discussed in Sections 3.1 – 3.4 to assist practitioners in avoiding any unintentional misuse or in identifying any intentional abuse of explainable ML techniques. The guidelines are:

1. Use explanations to enable understanding, not trust.
2. Learn how explainable ML is used for nefarious purposes.
3. Augment surrogate models with direct explanations.
4. Use fully transparent ML mechanisms for systems that affect humans.

Important corollaries to the guidelines are also highlighted and simple, reproducible software examples accompany the guidelines to avoid hypothetical reasoning whenever possible.

3.1 Guideline: Use Explanations to Enable Understanding, not Trust.



(a) Consistent global Shapley feature importance values for g_{GBM} .

(b) g_{GBM} deviance residuals and predictions by PAY_0 .

Figure 1: An unconstrained GBM probability of default model, g_{GBM} , generally over-emphasizes the importance of the input feature PAY_0 , a customer’s most recent repayment status. g_{GBM} produces large positive residuals when PAY_0 indicates on-time payments ($PAY_0 \leq 1$) and large negative residuals when PAY_0 indicates late payments ($PAY_0 > 1$). Combining explanatory and debugging techniques shows that g_{GBM} is explainable, but probably not trustworthy.

While they are likely necessary for trust in many cases, explanations are certainly not sufficient for trust in all cases. Explanation, as a general concept, is related more directly to understanding and transparency

than to trust.¹³ Simply put, one can understand and explain a model without trusting it. One can also trust a model and not be able to understand or explain it. Consider the following example scenarios.

- **Explanation and understanding without trust:** In Figure 1, global Shapley explanations and residual analysis identify a pathology in an unconstrained GBM model, g_{GBM} , trained on the UCI credit card dataset [22].¹⁴ g_{GBM} over-emphasizes the input feature PAY_0, or a customer’s most recent repayment status. Due to over-emphasis of PAY_0, g_{GBM} is often unable to predict on-time payment if recent payments are delayed (PAY_0 > 1), causing large negative residuals. g_{GBM} is also often unable to predict default if recent payments are made on-time (PAY_0 ≤ 1), causing large positive residuals. In this example scenario, g_{GBM} is explainable, but not trustworthy.
- **Trust without explanation and understanding:** Years before reliable explanation techniques were widely acknowledged and available, black-box predictive models, such as autoencoder and MLP neural networks, were used for fraud detection in the financial services industry [15]. When these models performed well, they were trusted.¹⁵ However, they were not explainable or well-understood by contemporary standards.

If trust in models is your goal, then explanations alone are not sufficient. However, as discussed in Sections 3.4 and 4 and illustrated in Figure 4, in an ideal scenario, explanation techniques would be used with a wide variety of other methods to increase accuracy, fairness, interpretability, privacy, security, and trust in ML models.

3.2 Guideline: Learn How Explainable ML is Used for Nefarious Purposes.

When used disingenuously, explainable ML methods can provide cover for misused or intentionally abusive black-boxes [1]. Explainable ML methods can also enable hacking or stealing of models through public prediction APIs or other endpoints [34]. Moreover, explainable ML methods are likely to be used for other nefarious purposes in the future and may be used for unknown destructive purposes now. Responsible practitioners need to understand the malevolent side of this technology to better detect and correct misuse and abuse. Given that explainable ML techniques have already been released in popular open source and commercial software, it seems there is a need for agreed-upon best practices and education on responsible use.

3.2.1 Guideline Corollary: Explainable ML Can be Used to Crack Nefarious Black-boxes.

Used as white-hat hacking tools, explainable ML methods can draw attention to potential fairness or accuracy problems in proprietary black-boxes. See Angwin et al. [2] for evidence that cracking of commercial black-box models for oversight purposes is possible.¹⁶ Such investigations would likely only be improved by advances in explanatory and fairness tools.

3.3 Augment Surrogate Models with Direct Explanations.

Models of models, or surrogate models, can be helpful explanatory tools, but they are usually approximate, low-fidelity explainers. Aside from 1.) a global or local summary of a complex model provided by a surrogate model can be helpful sometimes and 2.) much work in explainable ML has been directed toward improving the fidelity and usefulness of surrogate models [4], [5], [6], [20], [36], *many explainable ML techniques have nothing to do with surrogate models!* One of the most exciting breakthroughs for supervised learning problems in explainable ML is the application of a coalitional game theory concept, Shapley values, to compute feature

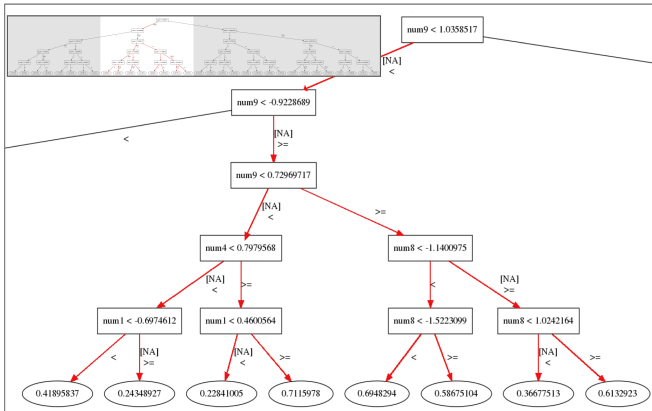
¹³The Merriam-Webster definition of *explain*, accessed May 8th 2019, does not mention *trust*: <https://www.merriam-webster.com/dictionary/explain>.

¹⁴Code to replicate Figure 1 is available here: https://github.com/jphall663/responsible_xai.

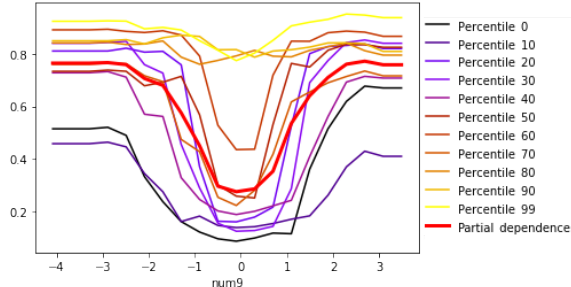
¹⁵For example: https://www.sas.com/en_ph/customers/hsbc.html, <https://www.kdnuggets.com/2011/03/sas-patent-fraud-detection.html>.

¹⁶This text makes no claim on the quality of the analysis in Angwin et al. (2016), which has been criticized [9]. This now infamous analysis is presented only as evidence that motivated activists can crack commercial black-boxes using surrogate models and other explanatory techniques.

attributions which are consistent globally and accurate locally using the trained model itself [25], [33]. An extension of this idea, called tree SHAP, has already been implemented for popular tree ensemble methods [26].



(a) Naïve h_{tree} , a surrogate model, forms an approximate overall flowchart for the explained model, g_{GBM} .



(b) Partial dependence and ICE curves generated directly from the explained model, g_{GBM} .

Figure 2: h_{tree} displays known interactions in $f = X_{\text{num}1} * X_{\text{num}4} + |X_{\text{num}8}| * X_{\text{num}9}^2$ for $\sim -0.923 < X_{\text{num}9} < \sim 1.04$. Modeling of the known interaction between $X_{\text{num}9}$ and $X_{\text{num}8}$ in f by g_{GBM} is confirmed by the divergence of partial dependence and ICE curves for $\sim -1 < X_{\text{num}9} < \sim 1$. Explanations from a surrogate model have augmented and confirmed findings from a direct model visualization technique.

There are many other explainable ML methods that operate on trained models directly such as partial dependence, ALE, and ICE plots [3], [11], [14]. Surrogate models and explanatory techniques that operate directly on trained models can also be combined, for instance by using partial dependence, ICE, and surrogate decision trees to investigate and confirm modeled interactions [18]. In Figure 2, an unconstrained GBM, g_{GBM} , models a known signal generating function f :

$$f(\mathbf{X}) = \begin{cases} 1 & \text{if } X_{\text{num}1} * X_{\text{num}4} + |X_{\text{num}8}| * X_{\text{num}9}^2 + e \geq 0.42 \\ 0 & \text{if } X_{\text{num}1} * X_{\text{num}4} + |X_{\text{num}8}| * X_{\text{num}9}^2 + e < 0.42 \end{cases} \quad (1)$$

where e signifies the injection of random noise in the form of label switching for roughly 15% of the training and validation observations.¹⁷ g_{GBM} is then trained such that $g_{\text{GBM}}(\mathbf{X}) \approx f(\mathbf{X})$ in training and validation data. h_{tree} , displayed in Figure 2a, is extracted such that $h_{\text{tree}}(\mathbf{X}) \approx g_{\text{GBM}}(\mathbf{X}) \approx f(\mathbf{X})$ in validation data. Partial dependence and ICE plots are generated directly for g_{GBM} in the same validation data and overlaid in Figure 2b. The parent-child node relationship displayed between $X_{\text{num}9}$ and $X_{\text{num}8}$ for $\sim -0.923 < X_{\text{num}9} < \sim 1.04$ in 2a and the divergence of ICE and partial dependence curves in 2b for $\sim -1 < X_{\text{num}9} < \sim 1$ help confirm and understand how g_{GBM} learned the interaction between $X_{\text{num}8}$ and $X_{\text{num}9}$ in f . Like in Figure 1, combining different approaches provided additional, beneficial information about a complex ML model.

3.3.1 Guideline Corollary: Augment LIME with Direct Explanations.

LIME is important, imperfect (like every other ML technique), and one of many explainable ML tools. LIME, in its most popular implementation, uses local linear surrogate models to explain regions of complex, machine-learned response functions [30]. Like other surrogate models, LIME can be combined with model-specific methods to yield deeper insights. Consider that tree SHAP can provide locally accurate and

¹⁷Code to replicate Figure 2 is available here: https://github.com/h2oai/mli-resources/tree/master/lime_shap_treeint_compare.

consistent point estimates for local feature importance as in 3b. LIME can then provide approximate information about modeled local linear trends around the same point. Table 1 contains LIME h_{GLM} coefficients for a local region of a validation set sampled from the UCI credit card data defined by $PAY_0 > 1$, or customers with a fairly high risk of default due to late most recent payments.¹⁸ h_{GLM} models the predictions of a simple interpretable decision tree model, g_{tree} , displayed in 3a. h_{GLM} coefficients show linear trends between features in the sampled set $\mathbf{X}_{PAY_0>1}$ and $g_{tree}(\mathbf{X}_{PAY_0>1})$. Because h_{GLM} is relatively well-fit (0.73 R^2) and has a logical intercept (0.77), it can be used along with Shapley values to reason about the modeled average behavior for risky customers and to differentiate the behavior of any one specific risky customer from their peers under the model. This additional information can be useful for model debugging and compliance purposes.

Table 1: Coefficients for a local linear interpretable model, h_{GLM} , with an intercept of 0.77 and an R^2 of 0.73. h_{GLM} is trained on a segment of the UCI credit card dataset containing higher-risk customers with late most recent repayment statuses, $\mathbf{X}_{PAY_0>1}$, and the predictions of a simple decision tree, $g_{tree}(\mathbf{X}_{PAY_0>1})$.

h_{GLM} Feature	h_{GLM} Coefficient
PAY_0 == 4	0.0009
PAY_2 == 3	0.0065
PAY_5 == 2	-0.0006
PAY_6 == 2	0.0036
BILL_AMT1	3.4339e-08
PAY_AMT1	4.8062e-07
PAY_AMT3	-5.867e-07

3.4 Use Fully Transparent ML Mechanisms for Systems That Affect Humans.

Explanation, along with white-box models, model debugging, disparate impact analysis, and the documentation they enable, are often required under numerous regulatory statutes in the U.S. and E.U., and explainable ML tools like surrogate models, partial dependence plots, and global feature importance are already used to document, understand, and validate different types of models in the financial services industry [20], [36].^{3, 6} Moreover, adverse action notices are mandated under the Equal Credit Opportunity Act (ECOA) and the Fair Credit Reporting Act (FCRA) for many credit lending, employment, and insurance decisions in the United States.¹⁹ If ML is used for such decisions it must be explained in terms of adverse action notices.²⁰ Shapley values, and other local feature importance approaches, provide a convenient methodology to rank the direct contribution of input features to final model decisions and potentially generate customer-specific adverse action notices. In these application domains, interpretability is simply a legal necessity.

Aside from regulatory mandates, explanation enables logical appeal processes for automated decisions made by ML models. Consider being negatively impacted by an erroneous black-box model decision, say for instance being mistakenly denied a loan or parole. How would you argue your case for appeal without knowing how model decisions were made? According to the New York Times, a man named Glenn Rodríguez found himself in this unfortunate position in a penitentiary in Upstate New York in 2016.²¹

Some may argue that, outside of regulated dealings, for a model with little or no impact on humans and that has been thoroughly and responsibly tested by knowledgeable practitioners, that explanation is *really* unnecessary. While that statement appears technically true, the counter argument in this case centers on

¹⁸Code to replicate Table 1 is available here: https://github.com/jphall663/responsible_xai.

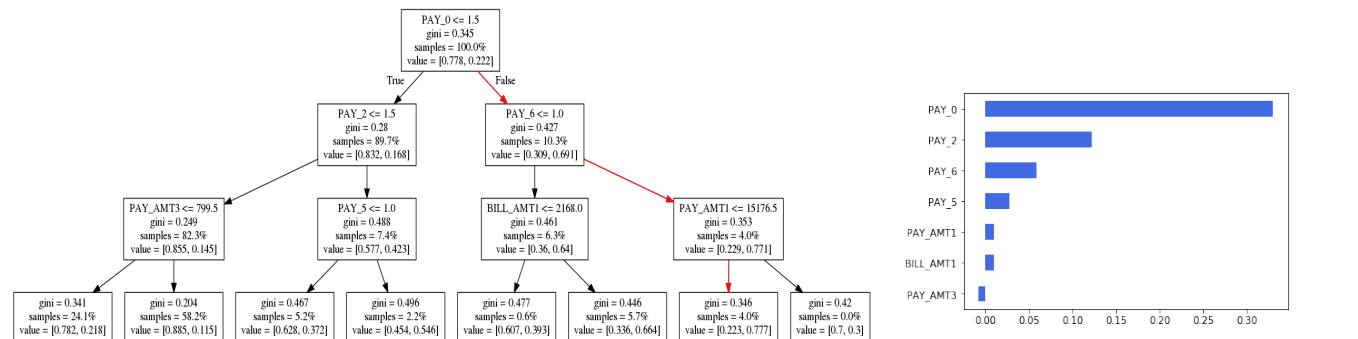
¹⁹See: <https://consumercomplianceoutlook.org/2013/second-quarter/adverse-action-notice-requirements-under-ecoa-fcra/>.

²⁰This is apparently *already* happening: <https://www.prnewswire.com/news-releases/new-patent-pending-technology-from-equifax-enables-configurable-ai-models-300701153.html>.

²¹This too is happening *today*: <https://www.nytimes.com/2017/06/13/opinion/how-computers-are-harming-criminal-justice.html>.

human learning from ML models. Explanatory techniques allow practitioners to gain insights from complex models about nonlinear or faint phenomena and complex interactions – information that may sometimes be unlearnable by linear models. Also, why go through the weeks, months, or years of training and deploying a production ML system, and not take a small percentage of that time to learn about the model’s findings?

3.4.1 Guideline Corollary: Use Interpretable Models Along with Explanation Techniques.



(a) Simple decision tree, g_{tree} , trained on the UCI credit card data to predict default with validation AUC of 0.74. The decision policy for a high-risk individual is highlighted in red.

(b) Locally-accurate Shapley contributions for the highlighted individual’s probability of default.

Figure 3: A simple decision tree, g_{tree} , is trained on the UCI credit card dataset to predict probability of default. g_{tree} has a validation AUC of 0.74. The decision-policy for a high-risk customer is highlighted in 3a and the locally-accurate Shapley contributions for this same individual’s predicted probability are displayed in 3b. The Shapley values are helpful because they highlight the local importance of PAY_2, the individual’s second most recent repayment status, which could be underestimated by examining the decision policy alone.

A few well-known publications have focused either on white-box modeling techniques (e.g. Ustun and Rudin [35], Yang et al. [39]) or on post-hoc explanations (e.g. Lundberg and Lee [25], Ribeiro et al. [30]), but the two can be used together in the context of a broader and more human-centered ML workflow as illustrated in Figure 4. Consider the seemingly useful example case of augmenting globally interpretable models with local post-hoc explanations. A practitioner could train a single decision tree, a globally interpretable model, then apply local explanations in the form of Shapley feature importance as illustrated in Figure 3.²² This enables the practitioner to see accurate numeric feature contributions for each model prediction in addition to the entire directed graph of the decision tree. Even for interpretable models, such as linear models and decision trees, it has been shown that Shapley values present accuracy and consistency advantages over standard feature attribution methods [23], [26], [25]. Shapley values also enable the ranking of input features for each model decision, which is likely helpful for FCRA and ECOA compliance. Another twist on the idea of combining explainable ML methods and white-box models is described in “Surrogate Assisted Feature Extraction for Machine Learning (SAFE ML)” (Gosiewska et al. [16]). In the SAFE ML approach, features learned by more complex models are extracted and used in an explainable fashion to increase the accuracy of more interpretable models. Aren’t either of these augmented processes more desirable than either a white-box model or post-hoc explanations alone?

3.4.2 Guideline Corollary: Use Explanations Along with Disparate Impact Analysis.

Like white-box models, fairness methods (e.g. Feldman et al. [8], Hardt et al. [19]) are often presented in different articles than post-hoc explanatory methods. However, in banks, using post-hoc explanatory tools such as partial dependence plots to comply with model documentation guidance often goes along with using

²²Code to replicate Figure 3 is available here: https://github.com/jphall663/responsible_xai.

disparate impact analysis to comply with fair lending regulations.^{6,23,24} To clarify, explanatory techniques should *not* replace disparate impact testing for bias detection purposes, but in general, explanations increase transparency and understanding of model mechanisms and predictions while disparate impact auditing and remediation increases trust that model predictions are as fair as possible. As in previous sections, trust and understanding are different but complimentary goals achieved by combining multiple approaches.

Table 2: Basic group disparity metrics across different marital statuses for monotonically constrained GBM model, g_{mono} , trained on the UCI credit card dataset.

	Adverse Impact Disparity	Accuracy Disparity	TPR Disparity	TNR Disparity	FPR Disparity	FNR Disparity
married	1.00	1.00	1.00	1.00	1.00	1.00
single	0.89	1.03	0.99	1.03	0.85	1.01
divorced	1.01	0.93	0.81	0.96	1.25	1.22
other	0.26	1.12	0.62	1.17	0	1.44

Table 2 displays basic group disparity metrics for a monotonically constrained GBM model, g_{mono} , trained on the UCI credit card data.²⁵ In this example scenario, g_{mono} displays group parity according to the four-fifths rule with **married** as the reference level for single customers, but exposes potential disparate impact for **divorced** customers and customers with martial status of **other** (for which there is very little training data). Alternative models with less disparate impact or other remediation processes should be considered in such cases to increase trust ML systems.

4 Conclusion

ML systems are used today to make life-altering decisions about employment, bail, parole, and lending.²⁶ The scope of decisions delegated to ML systems seems likely only to expand in the future. Many researchers and practitioners are tackling disparate impact, inaccuracy, privacy violations, and security vulnerabilities with a number of brilliant, but perhaps siloed, approaches. By presenting some straightforward explainable ML guidelines, this short text also gives examples of combining innovations from several sub-disciplines of ML research to train explainable, fair, and trustable predictive modeling systems. As proposed in Figure 4, using these techniques together can create a new and more human-centered type of ML potentially better-suited for use in business- and life-critical decision support than conventional methods.

²³White paper: <https://www.aba.com/Compliance/Documents/FairLendingWhitePaper2017Apr.pdf>.

²⁴Policy Statement on Discrimination in Lending: <https://www.govinfo.gov/content/pkg/FR-1994-04-15/html/94-9214.htm>.

²⁵Code to replicate Table 2 is available here: https://github.com/jphall663/responsible_xai.

²⁶ICLR 2019 model debugging workshop CFP: <https://debug-ml-iclr2019.github.io/>.

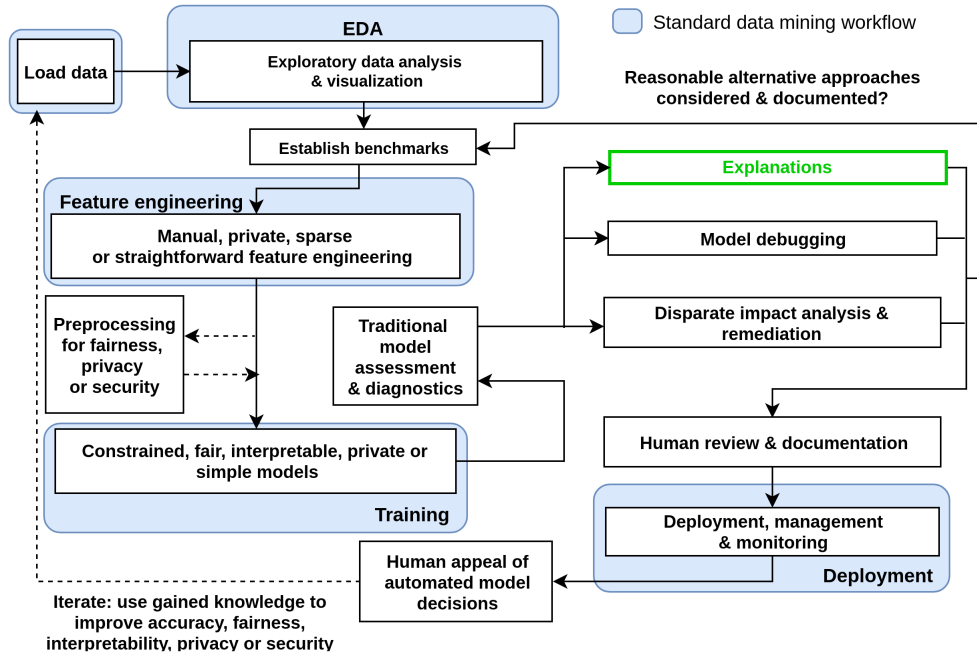


Figure 4: A diagram of a proposed human-centered ML workflow in which explanations (highlighted in green) are used along with interpretable or white-box models, disparate impact analysis and remediation techniques, and other review and appeal mechanisms to create a fair, accountable, and transparent ML system.

Acknowledgements

The author thanks Przemyslaw Biecek, Prमित Choudhary, Navdeep Gill, Christoph Molnar, and numerous members of the online data science community for their helpful input and insights.

References

- [1] Ulrich Aivodji, Hiromi Arai, Olivier Fortineau, Sébastien Gambs, Satoshi Hara, and Alain Tapp. Fairwashing: the Risk of Rationalization. *arXiv preprint arXiv:1901.09749*, 2019. URL: <https://arxiv.org/pdf/1901.09749.pdf>.
- [2] Julia Angwin, Jeff Larson, Surya Mattu, and Lauren Kirchner. Machine Bias: There’s Software Used Across the Country to Predict Future Criminals. And It’s Biased Against Blacks. *ProPublica*, 2016. URL: <https://www.propublica.org/article/machine-bias-risk-assessments-in-criminal-sentencing>.
- [3] Daniel W. Apley. Visualizing the Effects of Predictor Variables in Black Box Supervised Learning Models. *arXiv preprint arXiv:1612.08468*, 2016. URL: <https://arxiv.org/pdf/1612.08468.pdf>.
- [4] Osbert Bastani, Carolyn Kim, and Hamsa Bastani. Interpreting Blackbox Models via Model Extraction. *arXiv preprint arXiv:1705.08504*, 2017. URL: <https://arxiv.org/pdf/1705.08504.pdf>.
- [5] Osbert Bastani, Yewen Pu, and Armando Solar-Lezama. Verifiable Reinforcement Learning Via Policy Extraction. In *Advances in Neural Information Processing Systems*, pages 2494–2504, 2018. URL: <http://papers.nips.cc/paper/7516-verifiable-reinforcement-learning-via-policy-extraction.pdf>.
- [6] Mark W. Craven and Jude W. Shavlik. Extracting Tree-Structured Representations of Trained Networks. *Advances in Neural Information Processing Systems*, 1996. URL: <http://papers.nips.cc/paper/1152-extracting-tree-structured-representations-of-trained-networks.pdf>.

- [7] Finale Doshi-Velez and Been Kim. Towards a Rigorous Science of Interpretable Machine Learning. *arXiv preprint arXiv:1702.08608*, 2017. URL: <https://arxiv.org/pdf/1702.08608.pdf>.
- [8] Michael Feldman, Sorelle A. Friedler, John Moeller, Carlos Scheidegger, and Suresh Venkatasubramanian. Certifying and Removing Disparate Impact. In *Proceedings of the 21st ACM SIGKDD International Conference on Knowledge Discovery and Data Mining*, pages 259–268. ACM, 2015. URL: <https://arxiv.org/pdf/1412.3756.pdf>.
- [9] Anthony W. Flores, Kristin Bechtel, and Christopher T. Lowenkamp. False Positives, False Negatives, and False Analyses: A Rejoinder to Machine Bias: There’s Software Used across the Country to Predict Future Criminals. And It’s Biased against Blacks. *Fed. Probation*, 80:38, 2016. URL: https://www.researchgate.net/profile/Christopher_Lowenkamp/publication/306032039_False_Positives_False_Negatives_and_False_Analyses_A_Rejoinder_to_Machine_Bias_There%27s_Software_Used_Across_the_Country_to_Predict_Future_Criminals_And_it%27s_Biased_Against_Blacks/links/57ab619908ae42ba52aedbab/False-Positives-False-Negatives-and-False-Analyses-A-Rejoinder-to-Machine-Bias-Theres-Software-Used-Across-the-Country-to-Predict-Future-Criminals-And-its-Biased-Against-Blacks.pdf.
- [10] Sorelle A. Friedler, Chitradheep Dutta Roy, Carlos Scheidegger, and Dylan Slack. Assessing the Local Interpretability of Machine Learning Models. *arXiv preprint arXiv:1902.03501*, 2019. URL: <https://arxiv.org/pdf/1902.03501.pdf>.
- [11] Jerome Friedman, Trevor Hastie, and Robert Tibshirani. *The Elements of Statistical Learning*. Springer, New York, 2001. URL: https://web.stanford.edu/~hastie/ElemStatLearn/printings/ESLII_print12.pdf.
- [12] Marco Gillies, Rebecca Fiebrink, Atau Tanaka, Jérémie Garcia, Frédéric Bevilacqua, Alexis Heloir, Fabrizio Nunnari, Wendy Mackay, Saleema Amershi, Bongshin Lee, et al. Human-Centred Machine Learning. In *Proceedings of the 2016 CHI Conference Extended Abstracts on Human Factors in Computing Systems*, pages 3558–3565. ACM, 2016. URL: <http://research.gold.ac.uk/16112/1/HCML2016.pdf>.
- [13] Leilani H. Gilpin, David Bau, Ben Z. Yuan, Ayesha Bajwa, Michael Specter, and Lalana Kagal. Explaining Explanations: An Approach to Evaluating Interpretability of Machine Learning. *arXiv preprint arXiv:1806.00069*, 2018. URL: <https://arxiv.org/pdf/1806.00069.pdf>.
- [14] Alex Goldstein, Adam Kapelner, Justin Bleich, and Emil Pitkin. Peeking Inside the Black Box: Visualizing Statistical Learning with Plots of Individual Conditional Expectation. *Journal of Computational and Graphical Statistics*, 24(1), 2015. URL: <https://arxiv.org/pdf/1309.6392.pdf>.
- [15] Krishna M. Gopinathan, Louis S. Biafore, William M. Ferguson, Michael A. Lazarus, Anu K. Pathria, and Allen Jost. Fraud Detection using Predictive Modeling, October 6 1998. US Patent 5,819,226. URL: <https://patents.google.com/patent/US5819226A>.
- [16] Alicja Gosiewska, Aleksandra Gacek, Piotr Lubon, and Przemyslaw Biecek. SAFE ML: Surrogate Assisted Feature Extraction for Model Learning. *arXiv preprint arXiv:1902.11035*, 2019. URL: <https://arxiv.org/pdf/1902.11035v1.pdf>.
- [17] Riccardo Guidotti, Anna Monreale, Salvatore Ruggieri, Franco Turini, Fosca Giannotti, and Dino Pedreschi. A Survey of Methods for Explaining Black Box Models. *ACM Computing Surveys (CSUR)*, 51(5):93, 2018. URL: <https://arxiv.org/pdf/1802.01933.pdf>.
- [18] Patrick Hall. On the Art and Science of Machine Learning Explanations. In *JSM Proceedings, Statistical Computing Section*, pages 1781–1799. American Statistical Association, 2018. URL: https://github.com/jphall663/jsm_2018_paper.
- [19] Moritz Hardt, Eric Price, Nati Srebro, et al. Equality of Opportunity in Supervised Learning. In *Advances in Neural Information Processing Systems*, pages 3315–3323, 2016. URL: <http://papers.nips.cc/paper/6374-equality-of-opportunity-in-supervised-learning.pdf>.
- [20] Linwei Hu, Jie Chen, Vijayan N. Nair, and Agus Sudjianto. Locally Interpretable Models and Effects Based on Supervised Partitioning (LIME-SUP). *arXiv preprint arXiv:1806.00663*, 2018. URL: <https://arxiv.org/ftp/arxiv/papers/1806/1806.00663.pdf>.
- [21] Alon Keinan, Ben Sandbank, Claus C. Hilgetag, Isaac Meilijson, and Eytan Ruppin. Fair Attribution of Functional Contribution in Artificial and Biological Networks. *Neural Computation*, 16(9):1887–1915, 2004. URL: <http://citeseerx.ist.psu.edu/viewdoc/download?doi=10.1.1.436.6801&rep=rep1&type=pdf>.

- [22] M. Lichman. UCI Machine Learning Repository, 2013. URL: <http://archive.ics.uci.edu/ml>.
- [23] Stan Lipovetsky and Michael Conklin. Analysis of Regression in Game Theory Approach. *Applied Stochastic Models in Business and Industry*, 17(4):319–330, 2001.
- [24] Zachary C. Lipton. The Mythos of Model Interpretability. *arXiv preprint arXiv:1606.03490*, 2016. URL: <https://arxiv.org/pdf/1606.03490.pdf>.
- [25] Scott M. Lundberg and Su-In Lee. A Unified Approach to Interpreting Model Predictions. In I. Guyon, U. V. Luxburg, S. Bengio, H. Wallach, R. Fergus, S. Vishwanathan, and R. Garnett, editors, *Advances in Neural Information Processing Systems 30*, pages 4765–4774. Curran Associates, Inc., 2017. URL: <http://papers.nips.cc/paper/7062-a-unified-approach-to-interpreting-model-predictions.pdf>.
- [26] Scott M. Lundberg, Gabriel G. Erion, and Su-In Lee. Consistent Individualized Feature Attribution for Tree Ensembles. In Been Kim, Dmitry M. Malioutov, Kush R. Varshney, and Adrian Weller, editors, *Proceedings of the 2017 ICML Workshop on Human Interpretability in Machine Learning (WHI 2017)*, pages 15–21. ICML WHI 2017, 2017. URL: <https://openreview.net/pdf?id=ByTKSo-m->.
- [27] Christoph Molnar. *Interpretable Machine Learning*. christophm.github.io, 2018. URL: <https://christophm.github.io/interpretable-ml-book/>.
- [28] Christoph Molnar, Giuseppe Casalicchio, and Bernd Bischl. Quantifying Interpretability of Arbitrary Machine Learning Models Through Functional Decomposition. *arXiv preprint arXiv:1904.03867*, 2019. URL: <https://arxiv.org/pdf/1904.03867.pdf>.
- [29] W. James Murdoch, Chandan Singh, Karl Kumbier, Reza Abbasi-Asl, and Bin Yu. Interpretable Machine Learning: Definitions, Methods, and Applications. *arXiv preprint arXiv:1901.04592*, 2019. URL: <https://arxiv.org/pdf/1901.04592.pdf>.
- [30] Marco Tulio Ribeiro, Sameer Singh, and Carlos Guestrin. Why Should I Trust You?: Explaining the Predictions of Any Classifier. In *Proceedings of the 22nd ACM SIGKDD International Conference on Knowledge Discovery and Data Mining*, pages 1135–1144. ACM, 2016. URL: <http://www.kdd.org/kdd2016/papers/files/rfp0573-ribeiroA.pdf>.
- [31] Cynthia Rudin. Please Stop Explaining Black Box Models for High Stakes Decisions. *arXiv preprint arXiv:1811.10154*, 2018. URL: <https://arxiv.org/pdf/1811.10154.pdf>.
- [32] Lloyd S. Shapley, Alvin E. Roth, et al. *The Shapley value: Essays in honor of Lloyd S. Shapley*. Cambridge University Press, 1988. URL: <http://www.library.fa.ru/files/Roth2.pdf>.
- [33] Erik Strumbelj and Igor Kononenko. An Efficient Explanation of Individual Classifications using Game Theory. *Journal of Machine Learning Research*, 11(Jan):1–18, 2010. URL: <http://www.jmlr.org/papers/volume11/strumbelj10a/strumbelj10a.pdf>.
- [34] Florian Tramèr, Fan Zhang, Ari Juels, Michael K Reiter, and Thomas Ristenpart. Stealing Machine Learning Models via Prediction APIs. In *25th {USENIX} Security Symposium ({USENIX} Security 16)*, pages 601–618, 2016. URL: https://www.usenix.org/system/files/conference/usenixsecurity16/sec16_paper_tramer.pdf.
- [35] Berk Ustun and Cynthia Rudin. Supersparse Linear Integer Models for Optimized Medical Scoring Systems. *Machine Learning*, 102(3):349–391, 2016. URL: <https://users.cs.duke.edu/~cynthia/docs/UstunTrRuAAAI13.pdf>.
- [36] Joel Vaughan, Agus Sudjianto, Erind Brahim, Jie Chen, and Vijayan N. Nair. Explainable Neural Networks Based on Additive Index Models. *arXiv preprint arXiv:1806.01933*, 2018. URL: <https://arxiv.org/pdf/1806.01933.pdf>.
- [37] Adrian Weller. Challenges for Transparency. *arXiv preprint arXiv:1708.01870*, 2017. URL: <https://arxiv.org/pdf/1708.01870.pdf>.
- [38] Mike Williams et al. *Interpretability*. Fast Forward Labs, 2017. URL: <https://www.cloudera.com/products/fast-forward-labs-research.html>.
- [39] Hongyu Yang, Cynthia Rudin, and Margo Seltzer. Scalable Bayesian Rule Lists. In *Proceedings of the 34th International Conference on Machine Learning (ICML)*, 2017. URL: <https://arxiv.org/pdf/1602.08610.pdf>.